

FOR LEASE



# THE MEDICAL PARK 222

222 Ashville Avenue | Cary, NC 27518



CAPITAL  
ASSOCIATES®

# THE MEDICAL PARK 222

222 Ashville Avenue | Cary, NC 27518

<b>PROPERTY TYPE</b>	Medical Office
<b>BUILDING SIZE</b>	17,424 SF
<b>LEASING RATE</b>	\$24.00/SF
<b>LEASE TYPE</b>	NNN
<b>ESTIMATED TICAM</b>	\$4.50
<b>YEAR BUILT</b>	1994
<b>COUNTY</b>	Wake
<b>LOCATION</b>	Cary, NC
<b>FLOORS</b>	1
<b>PARKING</b>	Shared surface and deck parking



**BRET MULLER**  
919.523.4200  
bmuller@capitalassociates.com

**WES JOHNSON**  
919.422.4853  
wjohnson@capitalassociates.com



**CAPITAL  
ASSOCIATES.**

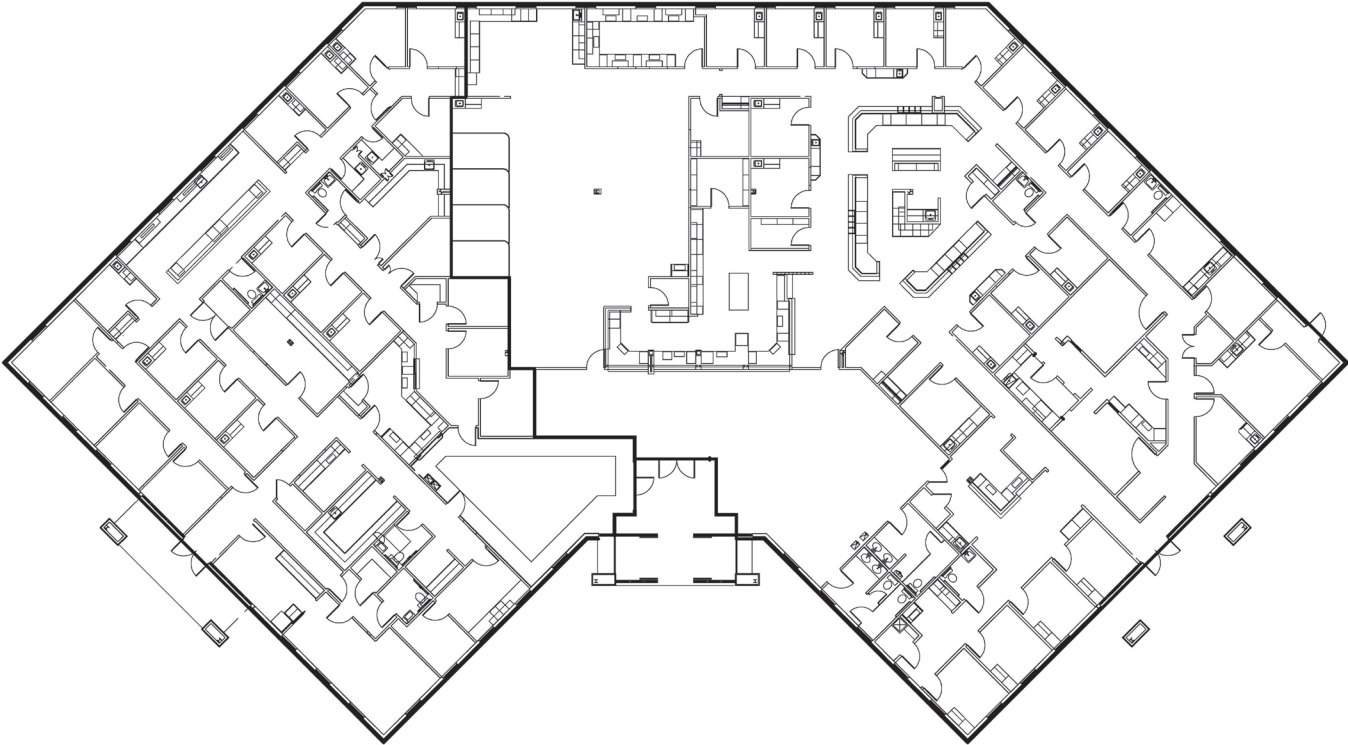
# THE MEDICAL PARK 222

222 Ashville Avenue | Cary, NC 27518

**AVAILABLE**

Entire Building  
Suites 10 & 20

17,424 SF



**BRET MULLER**  
919.523.4200  
bmuller@capitalassociates.com

**WES JOHNSON**  
919.422.4853  
wjohnson@capitalassociates.com



# THE MEDICAL PARK 222

222 Ashville Avenue | Cary, NC 27518

## PROPERTY HIGHLIGHTS

The Medical Park 222 is a 17,424 SF one-story medical office building located on WakeMed Cary's Hospital Campus with a 3-minute walk to the Hospital.

- On-site, responsive property management and maintenance staff
- Ideally situated near restaurants and lodging
- Easily accessible from I-40, US-64, US-1, and the I-440 Beltline

The Medical Park is home to a diverse mix of renowned medical practitioners and specialists.



**CAPITAL ASSOCIATES.**

**BRET MULLER**

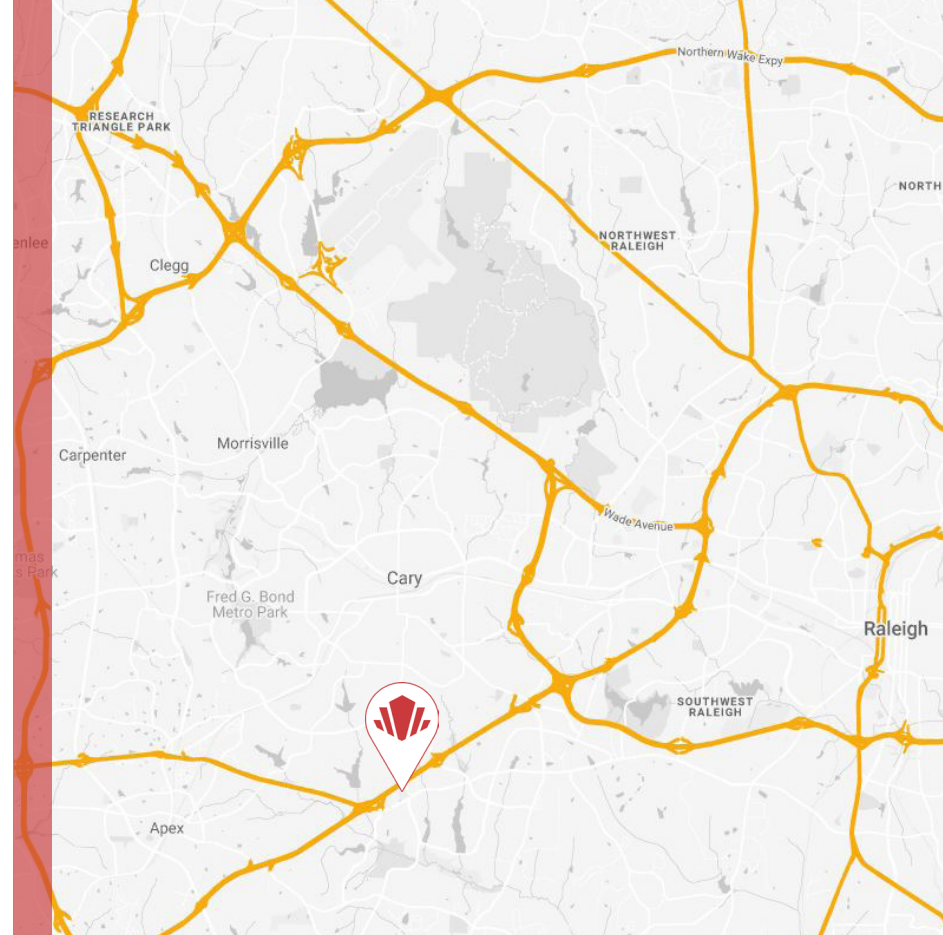
919.523.4200

[bmuller@capitalassociates.com](mailto:bmuller@capitalassociates.com)

**WES JOHNSON**

919.422.4853

[wjohnson@capitalassociates.com](mailto:wjohnson@capitalassociates.com)



IN THE HEART OF  
CARY'S MEDICAL HUB



