

FOR LEASE



EDINBURGH CENTER I

113 Edinburgh Drive South | Cary, NC 27511



CAPITAL
ASSOCIATES®

EDINBURGH CENTER I

113 Edinburgh Drive South | Cary, NC 27511

PROPERTY TYPE	Office
BUILDING SIZE	29,735 SF
YEAR BUILT	1984
COUNTY	Wake
LOCATION	Cary, NC
FLOORS	2
PARKING	3.12/1,000 SF



TRIPP BRADSHAW
919.749.0004
tbradshaw@capitalassociates.com

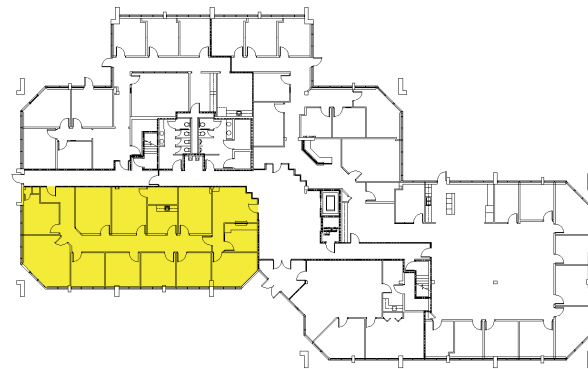
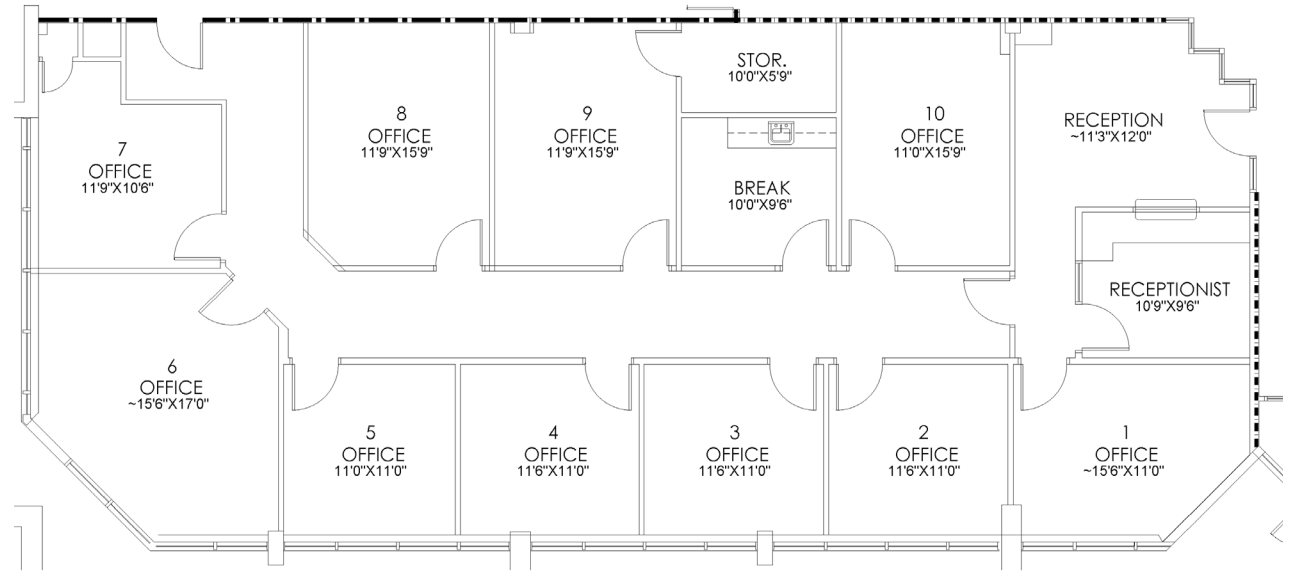
EDINBURGH CENTER I

113 Edinburgh Drive South | Cary, NC 27511

AVAILABLE

First Floor
Suite 130

3,052 SF



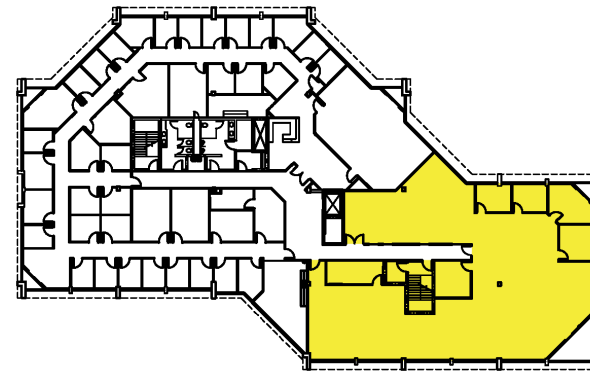
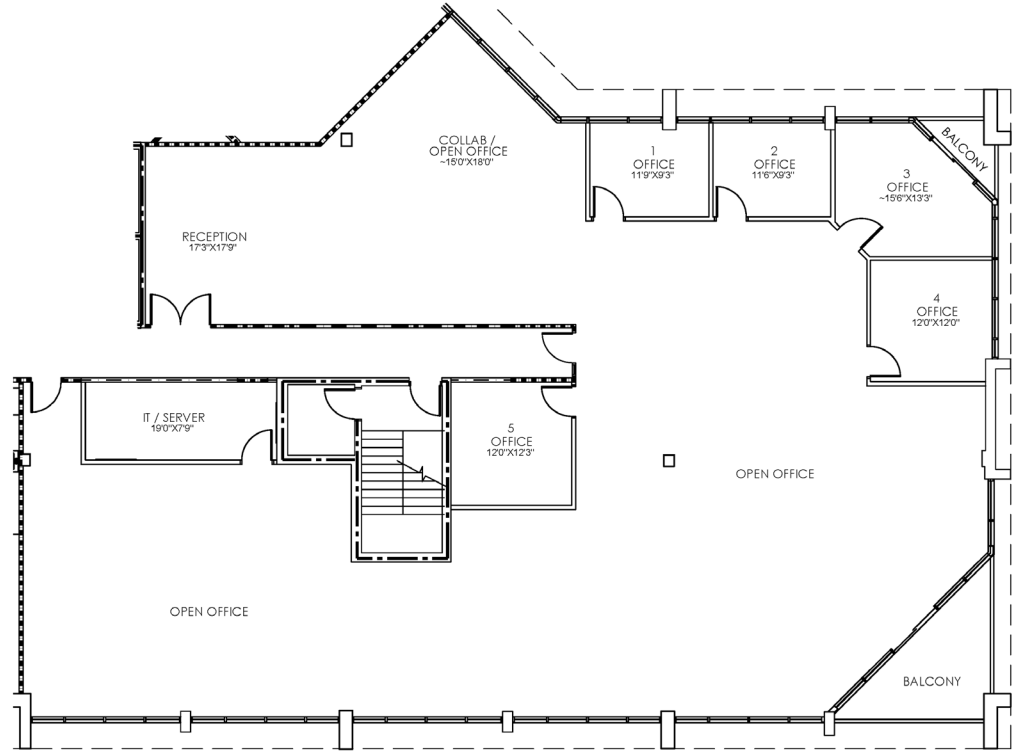
EDINBURGH CENTER I

113 Edinburgh Drive South | Cary, NC 27511

AVAILABLE

Second Floor
Suite 200

5,572 SF
Subdividable



TRIPP BRADSHAW
919.749.0004
tbradshaw@capitalassociates.com

EDINBURGH CENTER I

113 Edinbrough Drive South | Cary, NC 27511

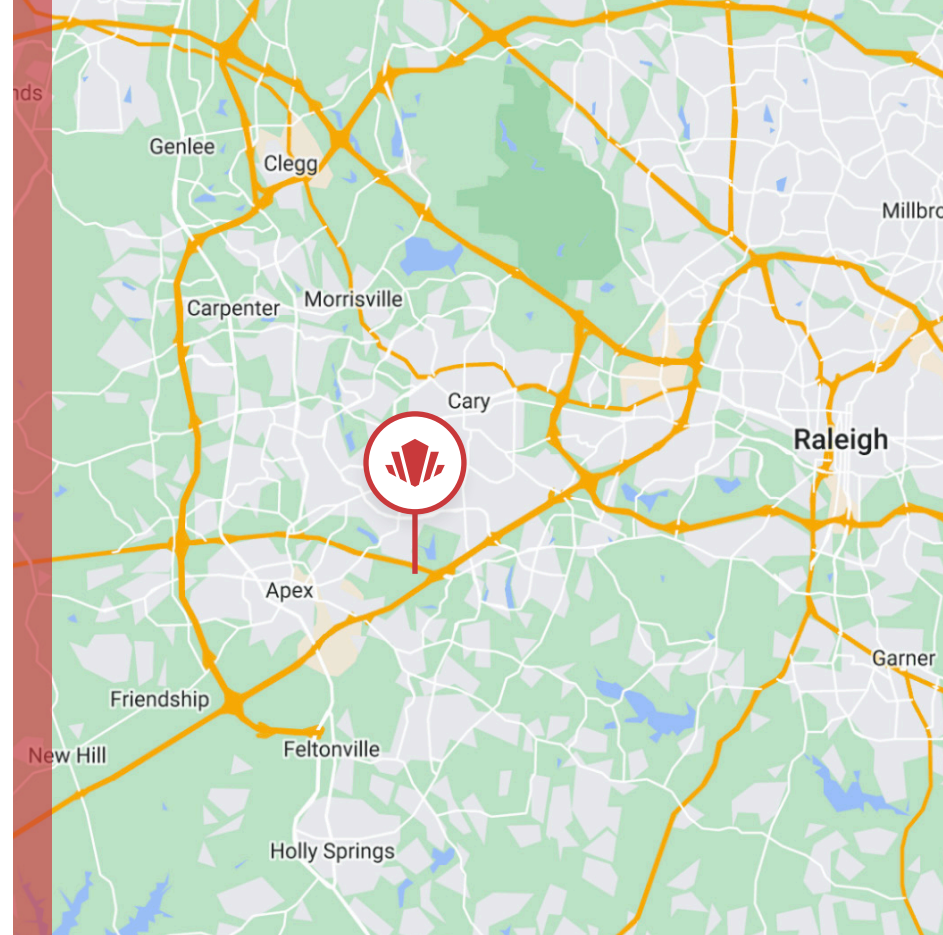
PROPERTY HIGHLIGHTS

Edinburgh Center I is a 29,735 SF two-story office building. Some of its highlights include:

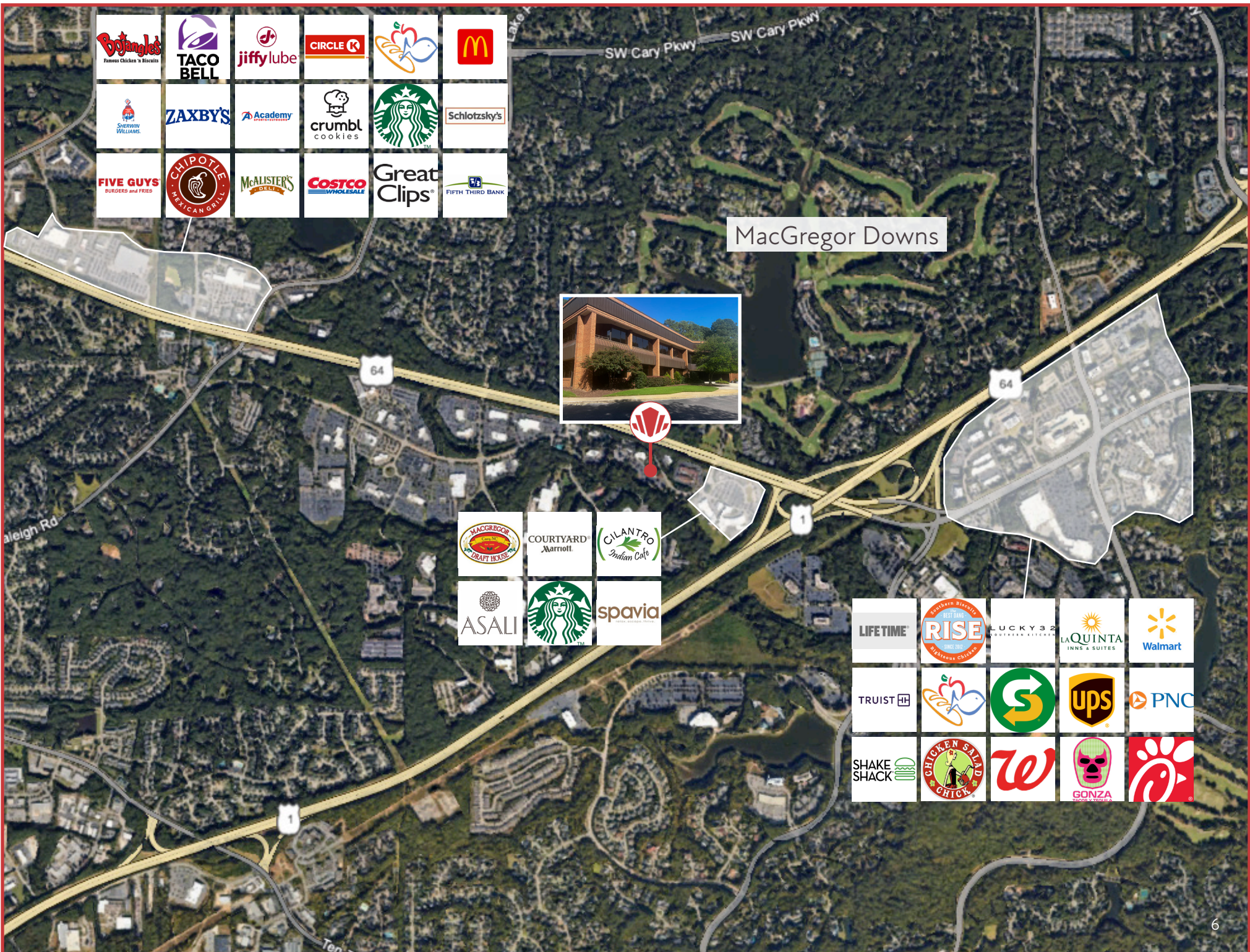
- Brick and glass construction
- Double pane tinted windows with custom blinds
- 4-minute walk to MacGregor Village
- Onsite banking services
- Fitness center
- Nearby bus line
- Easy access to US-1 and US-64

LOCATION

The building is located in Cary, just south of MacGregor Downs. It is ideally situated off Highway 64. The city of Cary is rapidly expanding its restaurants, attractions, residential neighborhoods, making it one of the most desirable places to work and live in the Triangle area.



TRIPP BRADSHAW
919.749.0004
tbradshaw@capitalassociates.com



MacGregor Downs



