

**+/- 22 ACRES FOR SALE**



**8020 LITCHFORD ROAD**

Raleigh, NC 27615 - Wake County



**CAPITAL ASSOCIATES®**

# 8020 LITCHFORD ROAD

Raleigh, NC 27615



**PROPERTY TYPE** Land

**ACREAGE** 22.24 acres

Tracts 1 & 2 may be purchased separately.

**SALE PRICE** Contact Broker

**ZONING** Ranges from R-1 to R-10 Across Site

**PIN** 1717882715

**COUNTY** Wake

**LOCATION** Raleigh, NC

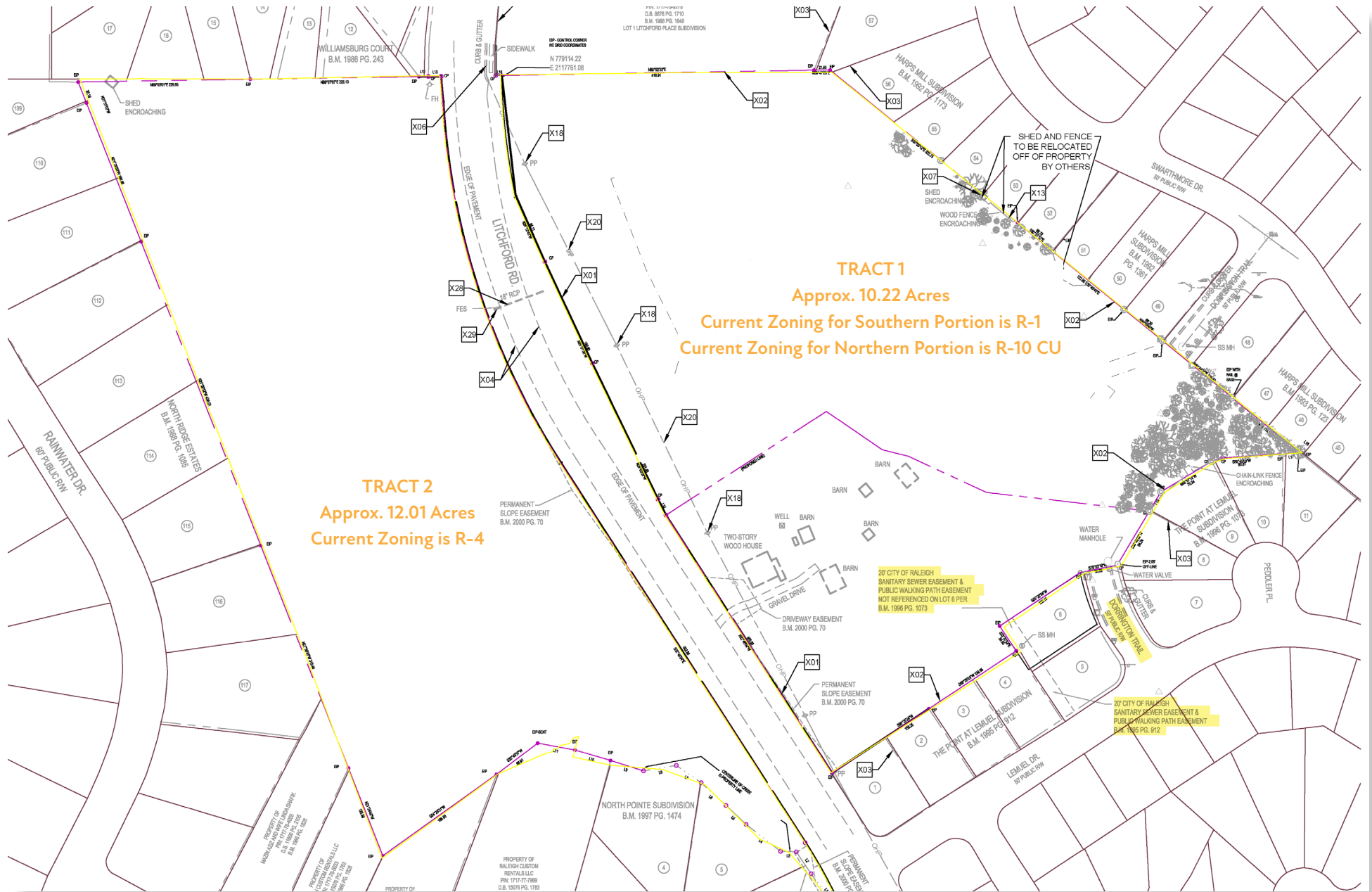
**ACCESS** NC-540



**TRIPP BRADSHAW**  
919.749.0004  
tbradshaw@capitalassociates.com

# 8020 LITCHFORD ROAD

Raleigh, NC 27615



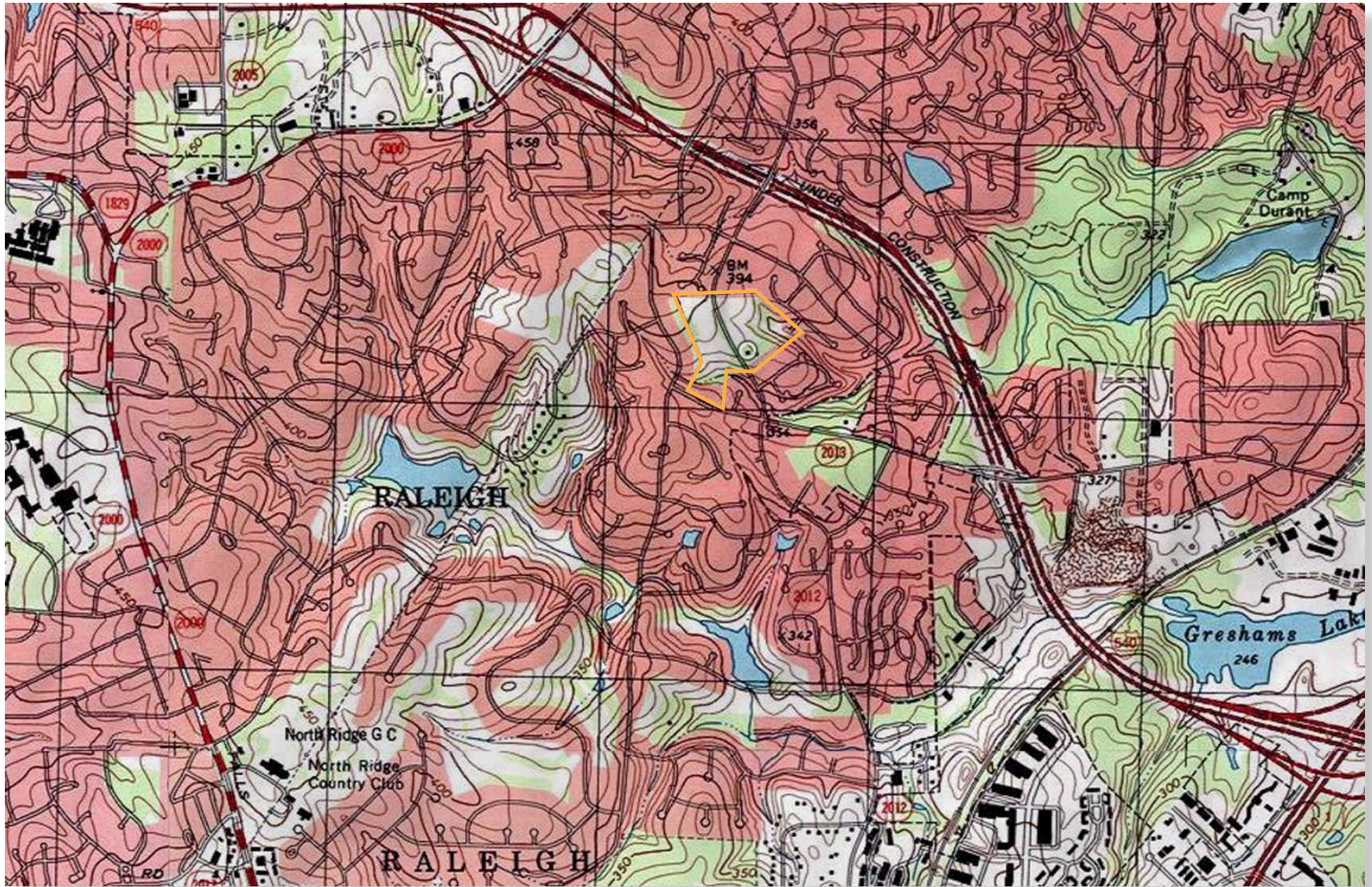
**TRIPP BRADSHAW**  
919.749.0004  
tbradshaw@capitalassociates.com

All data found in this document is derived from reliable sources. However, all data is subject to validation. Capital Associates Management, LLC is not independently responsible for the accuracy of this information.

# 8020 LITCHFORD ROAD

Raleigh, NC 27615

## TOPOGRAPHIC MAP



**TRIPP BRADSHAW**  
919.749.0004  
tbradshaw@capitalassociates.com

All data found in this document is derived from reliable sources. However, all data is subject to validation. Capital Associates Management, LLC is not independently responsible for the accuracy of this information.

# 8020 LITCHFORD ROAD

Raleigh, NC 27615

## PROPERTY HIGHLIGHTS

8020 Litchford Road is a 22.24 acre lot of land split across Litchford Road. Some of its highlights include:

- Easy access to NC-540
- Unique development opportunity in North Raleigh
- R-1, R-4, R-10 CU
- 1,620 SF building on the property

## DEMOGRAPHIC INFO

**80,009**  
Population

**38.8**  
Median Age



Average Household Size:  
2.3

**\$345,469**

Median Home Value



Number of Households:  
31,870

**52.79%**  
Owner Occupied



**47.21%**  
Renter Occupied

Average Household  
Income: \$72,712

\*Above data gathered within a 3-mile radius of the property

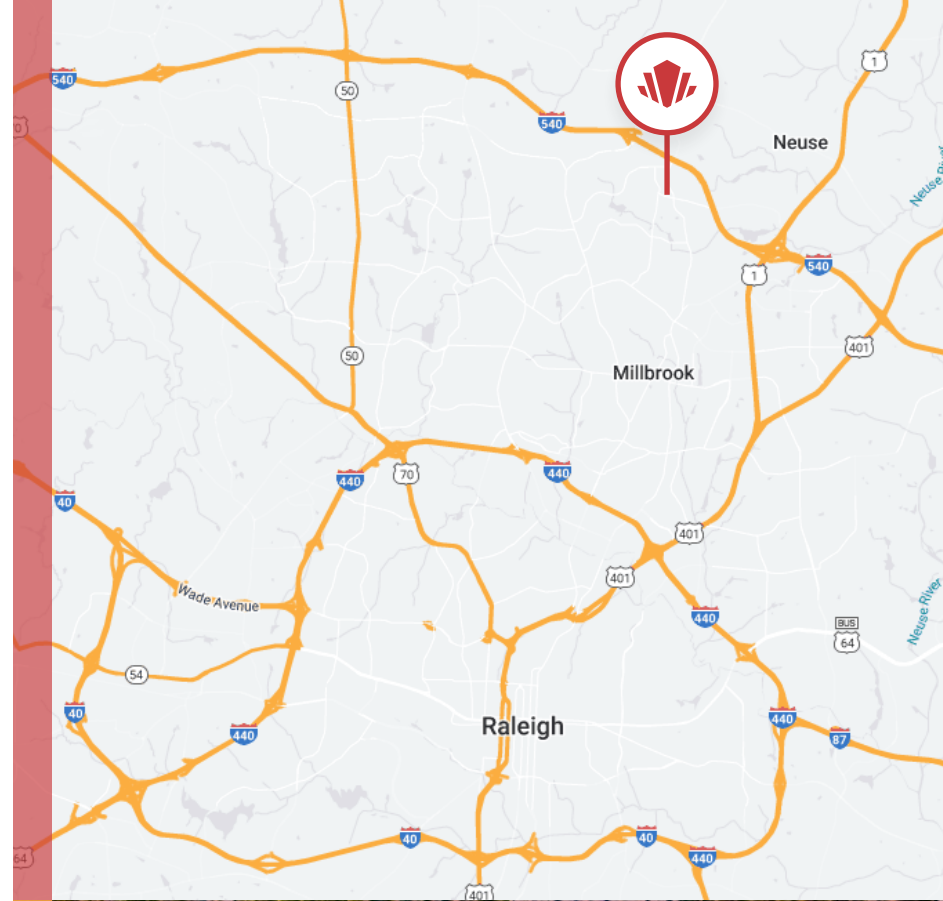


**CAPITAL ASSOCIATES.**

**TRIPP BRADSHAW**

919.749.0004

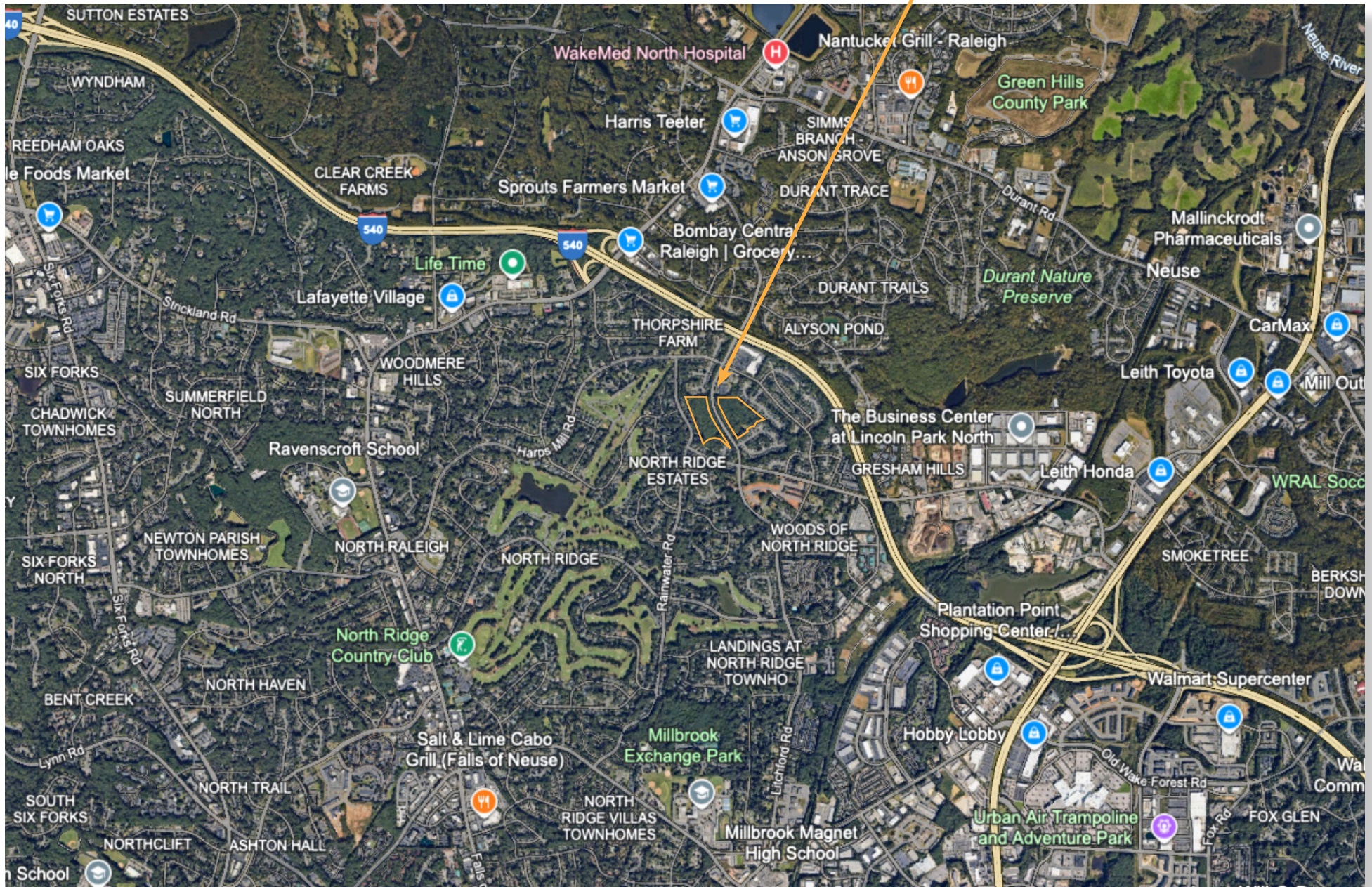
tbradshaw@capitalassociates.com



# 8020 LITCHFORD ROAD

Raleigh, NC 27615

## PROPERTY LOCATION



**CAPITAL ASSOCIATES.**

**TRIPP BRADSHAW**

919.749.0004

tbradshaw@capitalassociates.com

All data found in this document is derived from reliable sources. However, all data is subject to validation. Capital Associates Management, LLC is not independently responsible for the accuracy of this information.