

FOR SUBLEASE



REX CARY MEDICAL OFFICE

1505 SW Cary Parkway | Cary, NC 27511



CAPITAL
ASSOCIATES®

REX CARY MEDICAL OFFICE

1505 SW Cary Parkway | Cary, NC 27511

PROPERTY TYPE	Medical Office
BUILDING SIZE	63,554 SF
SUITE 201	2,665 SF
LEASING RATE	\$37.50/SF
LEASE TYPE	Full Service
YEAR BUILT	2003
COUNTY	Wake
LOCATION	Cary, NC
FLOORS	3

BRET MULLER
919.523.4200
bmuller@capitalassociates.com

HENRY NICHOLSON
919.417.3570
hnicholson@capitalassociates.com



**CAPITAL
ASSOCIATES.**

REX CARY MEDICAL OFFICE

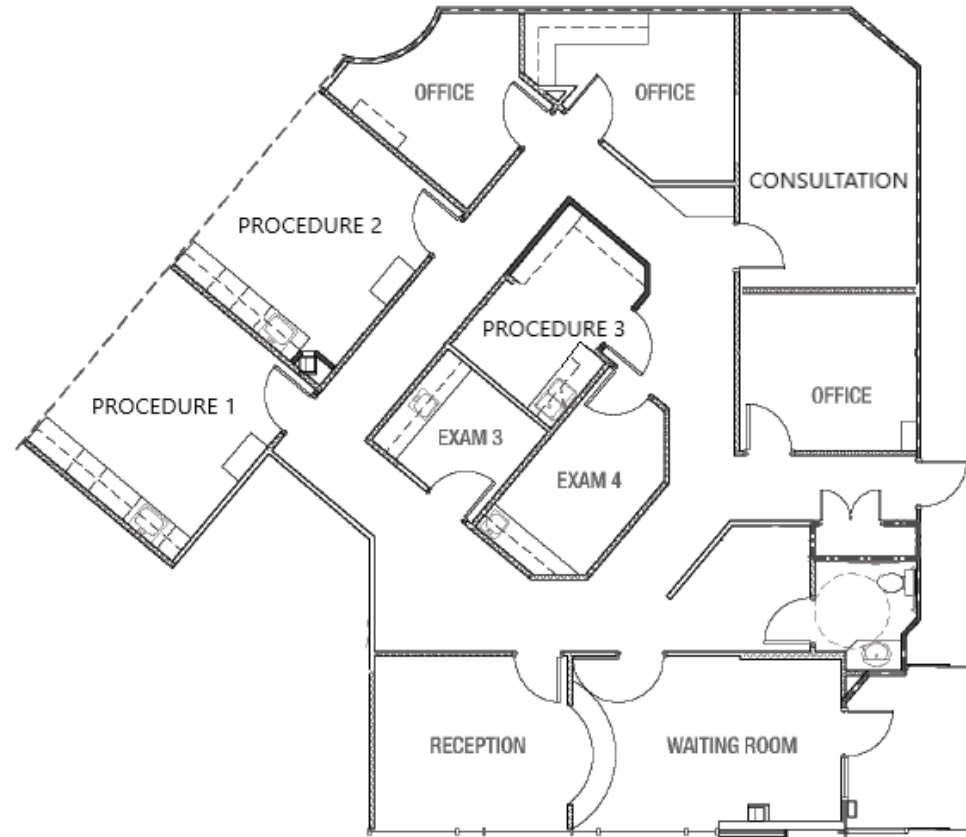
1505 SW Cary Parkway | Cary, NC 27511

AVAILABLE NOW
Lease Expires 6/30/33

Second Floor
Suite 201

2,665 SF

2nd Generation
Excellent Condition
Contains existing furnishings & equipment



BRET MULLER

919.523.4200

bmuller@capitalassociates.com

HENRY NICHOLSON

919.417.3570

hnicholson@capitalassociates.com



REX CARY MEDICAL OFFICE

1505 SW Cary Parkway | Cary, NC 27511

PROPERTY HIGHLIGHTS

- Three-story medical office building
- 63,554 square feet
- Covered drop off for patients
- Anchored by Rex Surgery Center
- Surrounded by well-known medical tenant practices

LOCATION

The building is located in south Cary, with quick access to Highway 64 and Interstates 540 and 440.



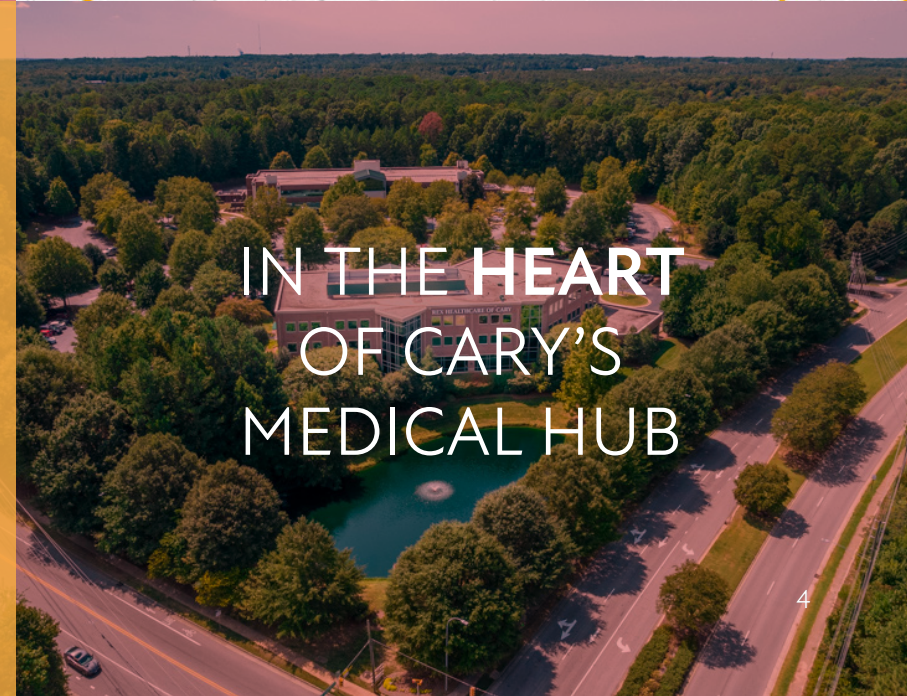
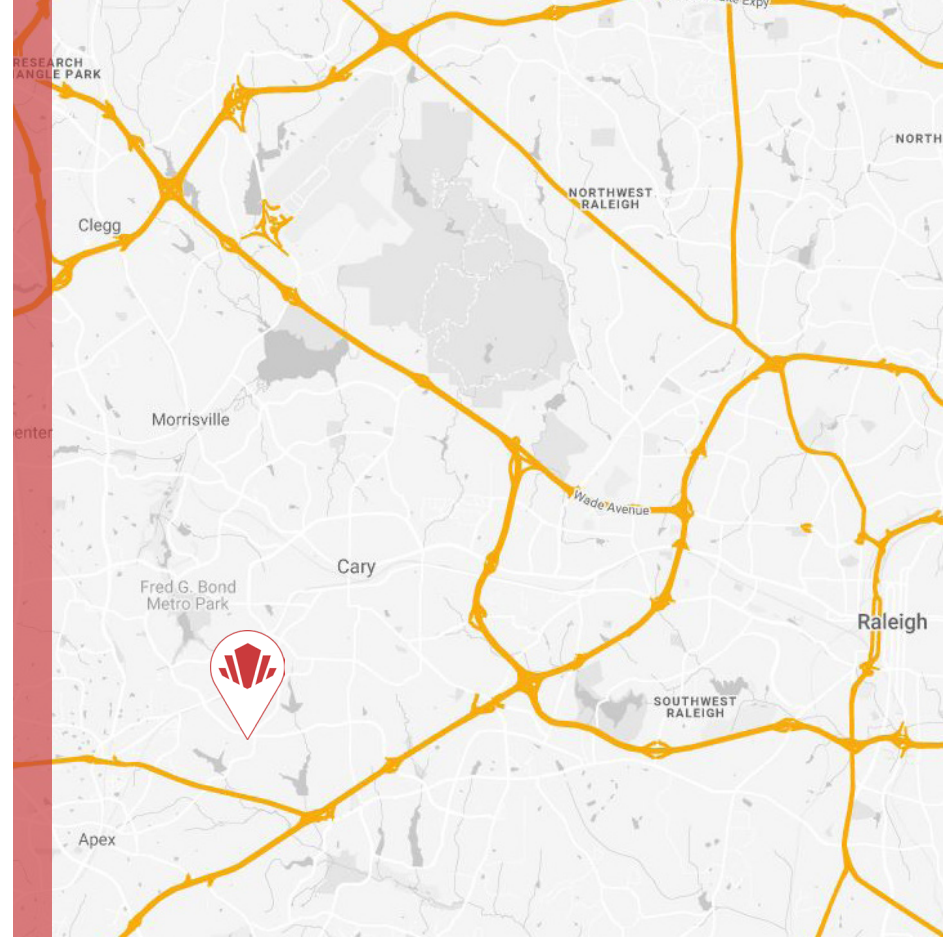
**CAPITAL
ASSOCIATES.**

BRET MULLER

919.523.4200
bmuller@capitalassociates.com

HENRY NICHOLSON

919.417.3570
hnicholson@capitalassociates.com



**IN THE HEART
OF CARY'S
MEDICAL HUB**

CURRENT REX CARY MOB TENANTS



North Raleigh
Gastroenterology
Experience and Care



HENRY NICHOLSON
919.417.3570
hnicholson@capitalassociates.com

BRET MULLER
919.523.4200
bmuller@capitalassociates.com

