



NOW PRE-LEASING

FOR 2026 OCCUPANCY

APEX MEDICAL CENTER

1405 Zeno Road | Apex, NC 27502



**CAPITAL
ASSOCIATES.**

APEX MEDICAL CENTER

1405 Zeno Road | Apex, NC 27502

PROPERTY TYPE Class A Medical Office

BUILDING SIZE +/- 54,000 SF

DELIVERY DATE 3rd Quarter 2026

COUNTY Wake

LOCATION Apex, NC

FLOORS 3

PARKING RATIO 4.5/1,000

FOR LEASE; OWNERSHIP AVAILABLE



BRET MULLER
919.523.4200
bmuller@capitalassociates.com

WES JOHNSON
919.422.4853
wjohnson@capitalassociates.com



APEX MEDICAL CENTER

1405 Zeno Road | Apex, NC 27502

PROPERTY HIGHLIGHTS

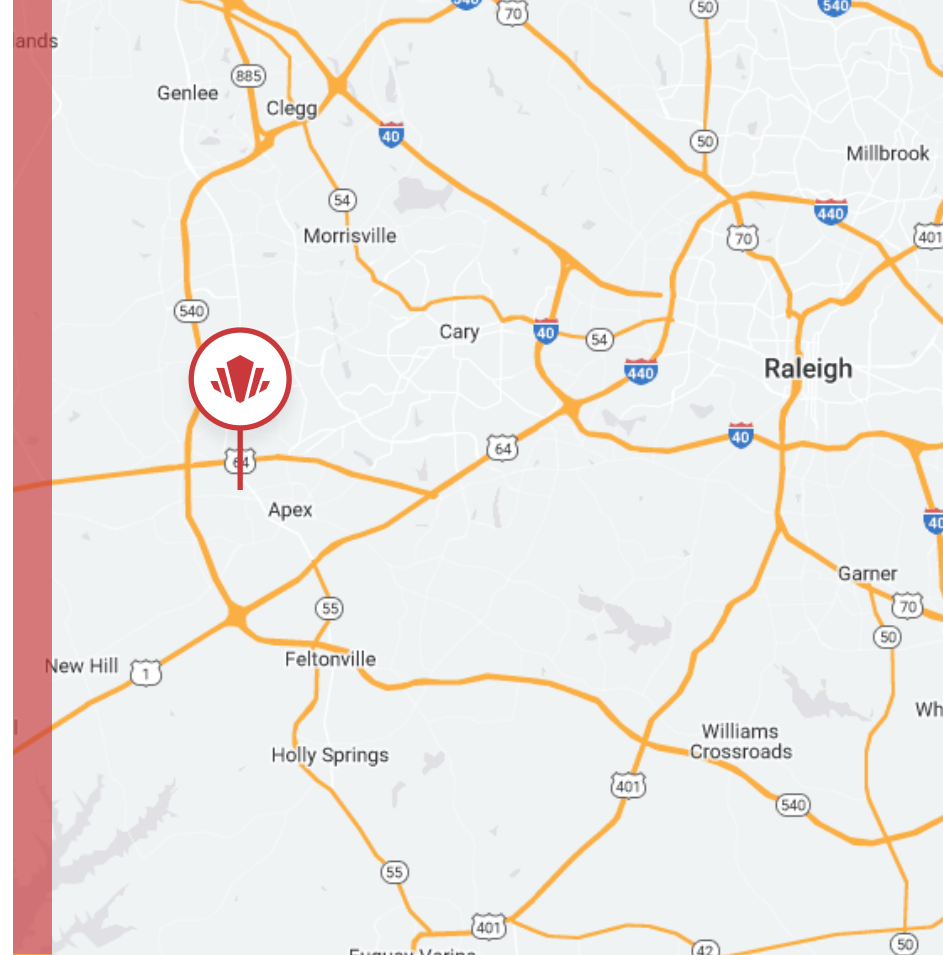
- Prime Location: Conveniently situated in Apex, NC, adjacent to WakeMed Apex Heathplex
- Spacious Design: Three-story, 54,000-square-foot medical office building
- Eco-Friendly: Energy-efficient LED lighting and sustainable design
- Advanced Electrical Systems: High-capacity electrical infrastructure for medical equipment
- Modern Lighting: Sleek and efficient LED lighting throughout
- Safety Features: Intelligent fire alarm system and emergency lighting
- Technology-Ready: Built-in support for data, voice, and fiber networks
- Future-Proof: Extra electrical capacity and room for expansion
- Convenient Parking: Accessible facilities, ample parking, and a patient-friendly drop-off/pick-up area
- Specialized Infrastructure: Includes an on-site MRI pad and supporting framework
- Customizable Interiors: Shell design allows tailored tenant fit-outs

BRET MULLER
919.523.4200
bmuller@capitalassociates.com

WES JOHNSON
919.422.4853
wjohnson@capitalassociates.com



CAPITAL ASSOCIATES.



2024 DEMOGRAPHICS

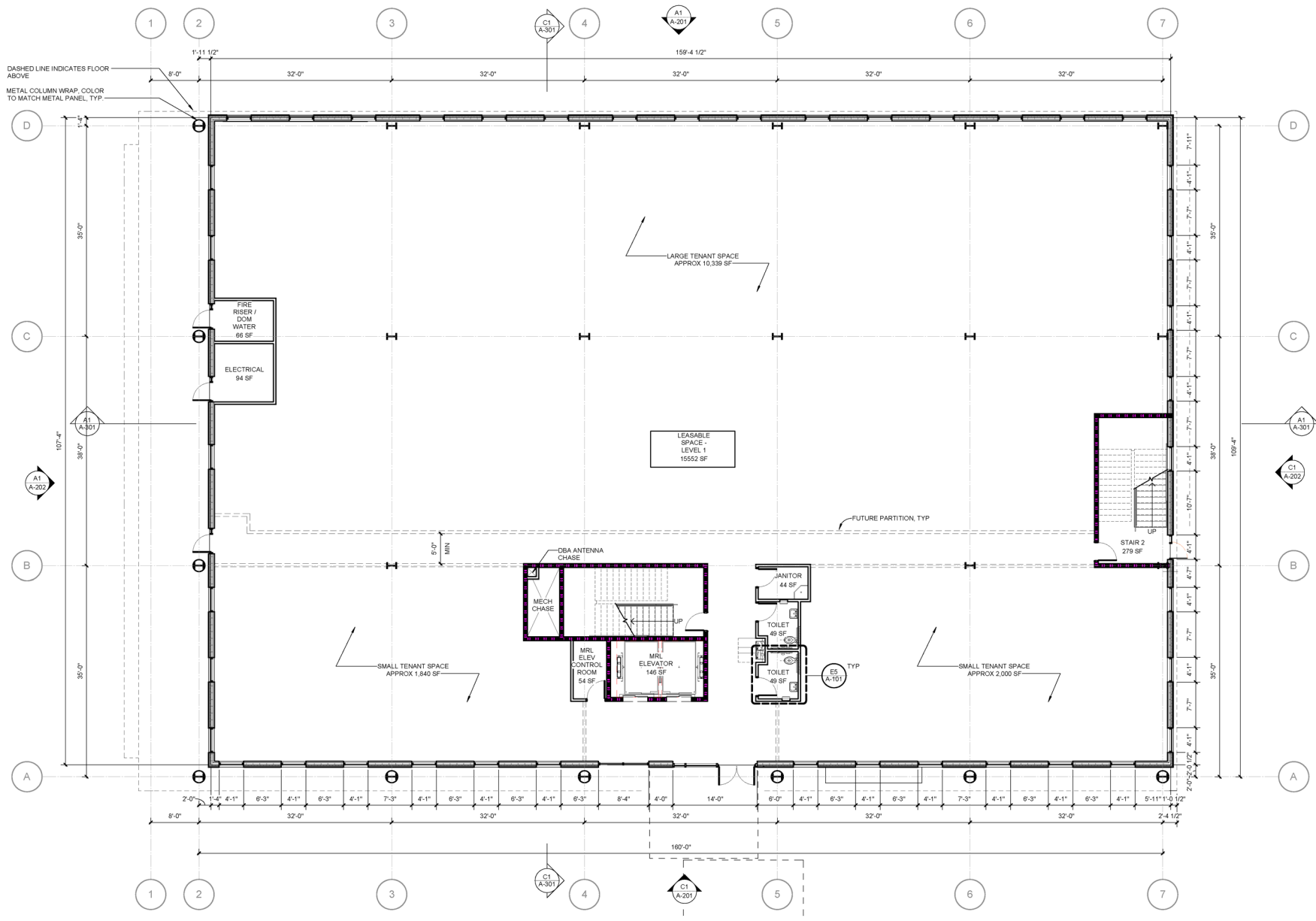
	2 MILES	5 MILES	10 MILES
POPULATION	35,918	145,938	422,095
HOUSEHOLDS	12,962	52,099	158,731
MEDIAN HH INCOME	\$120,935	\$132,203	\$114,453
MEDIAN AGE	38.6	39.9	38.1



APEX MEDICAL CENTER

1405 Zeno Road | Apex, NC 27502

FIRST FLOOR



CAPITAL ASSOCIATES.

BRET MULLER

919.523.4200

bmuller@capitalassociates.com

capitalassociates.com

WES JOHNSON

919.422.4853

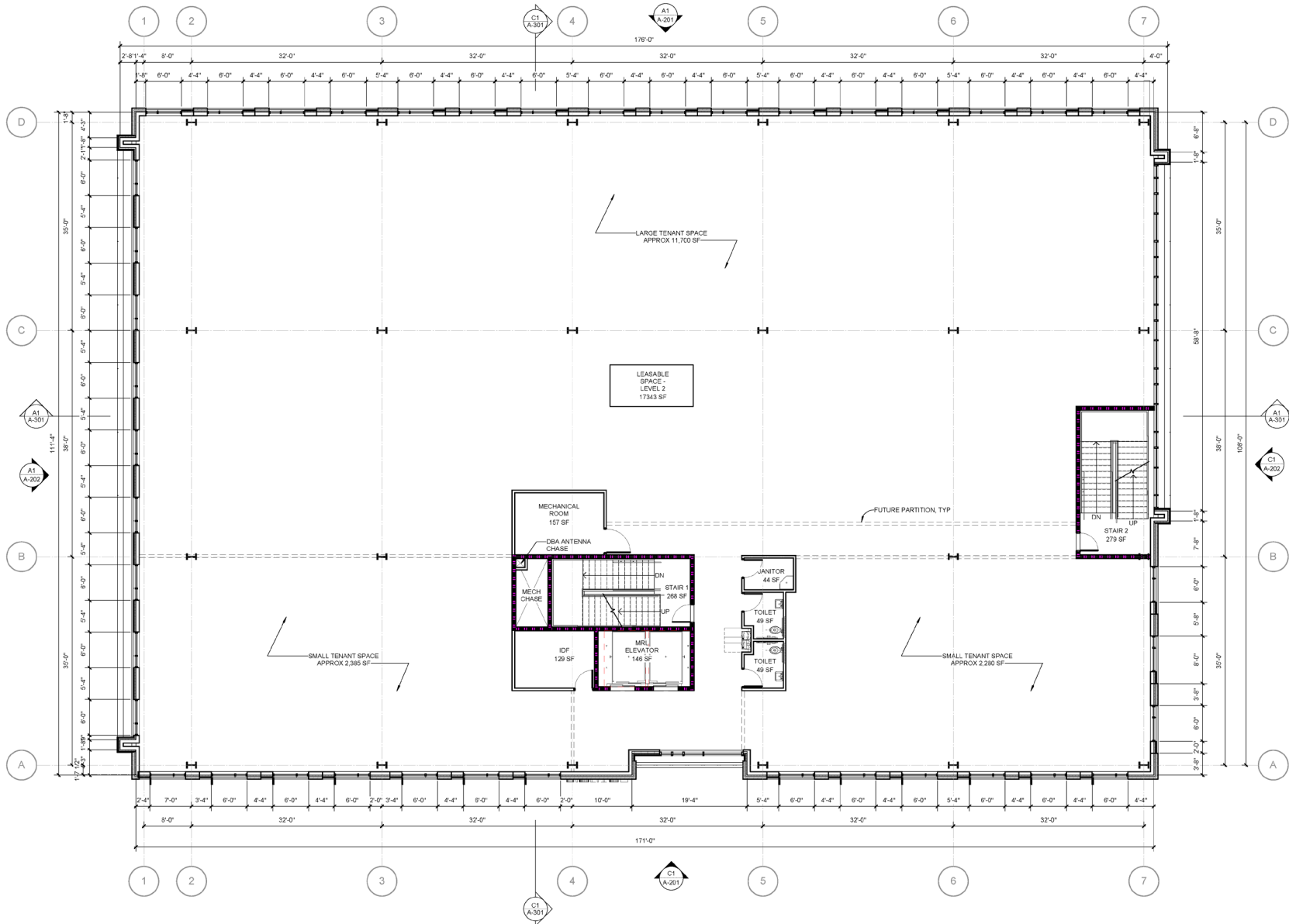
wjohnson@capitalassociates.com

capitalassociates.com

APEX MEDICAL CENTER

1405 Zeno Road | Apex, NC 27502

SECOND FLOOR



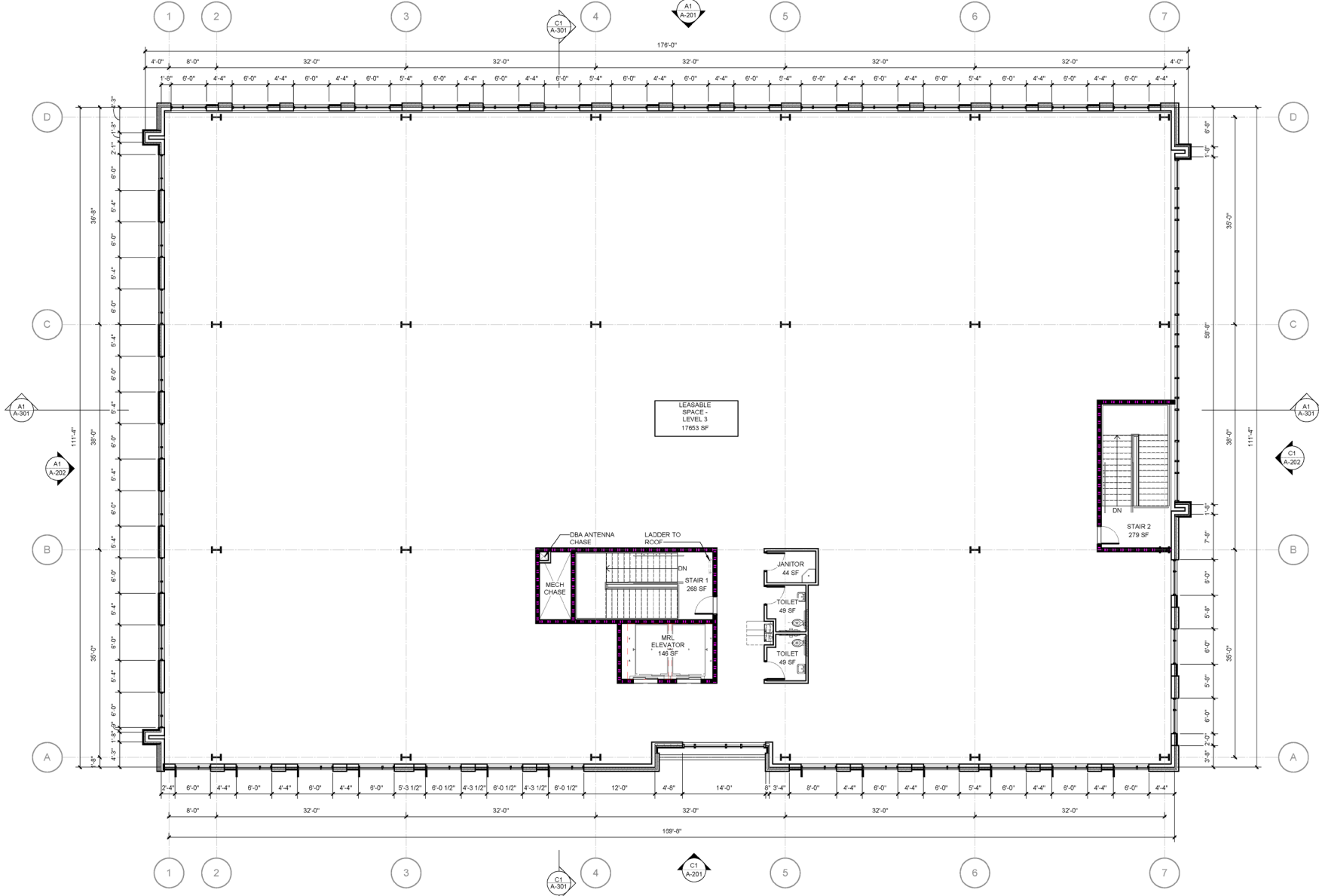
BRET MULLER
 919.523.4200
 bmuller@capitalassociates.com
 capitalassociates.com

WES JOHNSON
 919.422.4853
 wjohnson@capitalassociates.com
 capitalassociates.com

APEX MEDICAL CENTER

1405 Zeno Road | Apex, NC 27502

THIRD FLOOR



BRET MULLER
 919.523.4200
 bmuller@capitalassociates.com
 capitalassociates.com

WES JOHNSON
 919.422.4853
 wjohnson@capitalassociates.com
 capitalassociates.com



east west partners

LS3P



 walter
p moore





CBHF
Engineers, PLLC

 CAPITAL
ASSOCIATES.